



FASTKD1 rabbit pAb

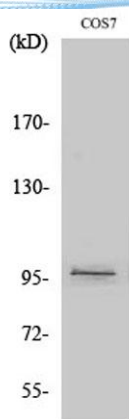
Cat No.:ES2330

For research use only

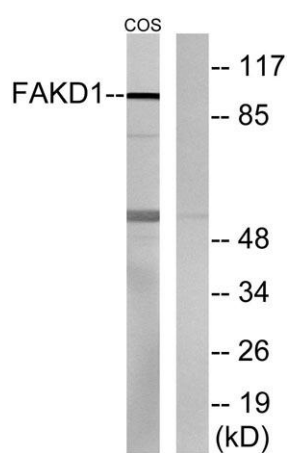
Overview

Product Name	FASTKD1 rabbit pAb
Host species	Rabbit
Applications	WB;ELISA
Species Cross-Reactivity	Human;Mouse;Monkey
Recommended dilutions	Western Blot: 1/500 - 1/2000. ELISA: 1/10000. Not yet tested in other applications.
Immunogen	The antiserum was produced against synthesized peptide derived from human FAKD1. AA range:561-610
Specificity	FASTKD1 Polyclonal Antibody detects endogenous levels of FASTKD1 protein.
Formulation	Liquid in PBS containing 50% glycerol, 0.5% BSA and 0.02% sodium azide.
Storage	Store at -20°C. Avoid repeated freeze-thaw cycles.
Protein Name	FAST kinase domain-containing protein 1
Gene Name	FASTKD1
Cellular localization	Mitochondrion . Preferentially localizes to mitochondrial RNA granules, platforms for post-transcriptional RNA modification and ribosome assembly (PubMed:28335001). .
Purification	The antibody was affinity-purified from rabbit antiserum by affinity-chromatography using epitope-specific immunogen.
Clonality	Polyclonal
Concentration	1 mg/ml
Observed band	97kD
Human Gene ID	79675
Human Swiss-Prot Number	Q53R41
Alternative Names	FASTKD1; KIAA1800; FAST kinase domain-containing protein 1
Background	caution:It is uncertain whether Met-1 or Met-15 is the initiator.,similarity:Belongs to the FAST kinase family.,similarity:Contains 1 RAP domain.,

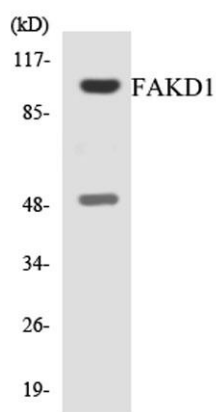




Western Blot analysis of various cells using FASTKD1 Polyclonal Antibody



Western blot analysis of lysates from COS7 cells, using FAKD1 Antibody. The lane on the right is blocked with the synthesized peptide.



Western blot analysis of the lysates from HT-29 cells using FAKD1 antibody.

